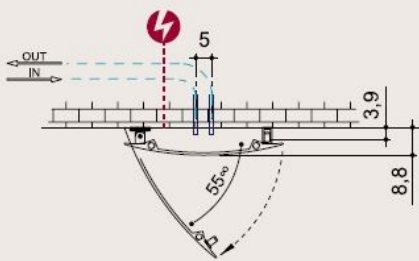
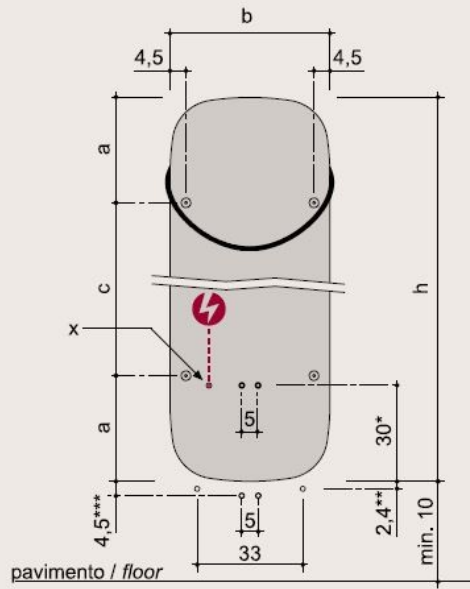


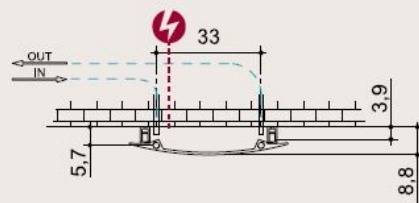
## VD 1110



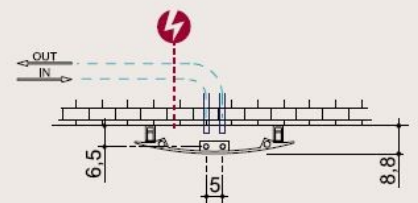
| hxb<br>(cm)        | n<br>numero<br>elementi/<br>elements<br>number | peso a<br>vuoto/<br>weight<br>empty<br>(kg) | volume<br>d'acqua/<br>water<br>volume<br>(dm <sup>3</sup> ) | a<br>(cm) | c<br>(cm) | d<br>(cm) | e<br>(cm) | Qs resa<br>termica/<br>thermal yield<br>□t 50°C (watt) | Q potenza<br>elettrica/<br>electrical power<br>(watt) | versione<br>mista****/<br>combined<br>version**** | fissa/<br>not<br>opening | apribile/<br>opening |
|--------------------|--|---|---|-----------|-----------|-----------|-----------|--|---|---|--------------------------|----------------------|
|                    |  |   |   |           |           |           |           |  |   |   |                          |                      |
| verticale/vertical |  |   |   |           |           |           |           |  |   |   |                          |                      |
| 120,0x49,0         | 1  | 16,6  | 0,66  | 33,0      | 54,0      | -         | -         | 515  | 500   | •   | •                        | •                    |
| 150,0x49,0         | 1  | 20,6  | 0,82  | 33,0      | 84,0      | -         | -         | 652  | 600   | •   | •                        | •                    |
| 180,0x49,0         | 1  | 25,5  | 0,99  | 33,0      | 114,0     | -         | -         | 795  | 800   | •   | •                        | •                    |



versione apribile  
opening version



versione fissa  
not opening version



versione fissa con sovrapprezzo  
not opening version with surcharge